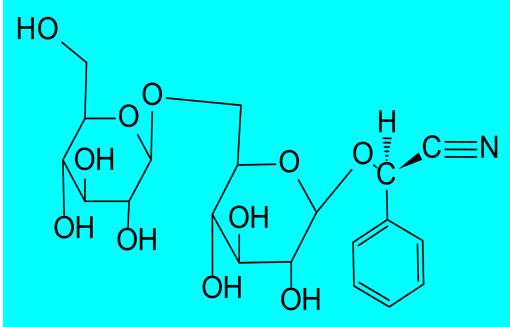
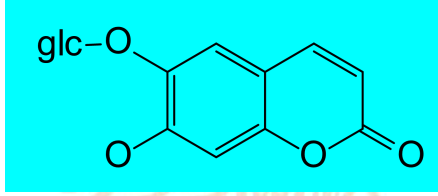
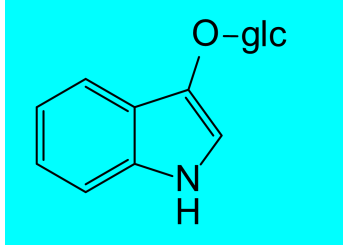
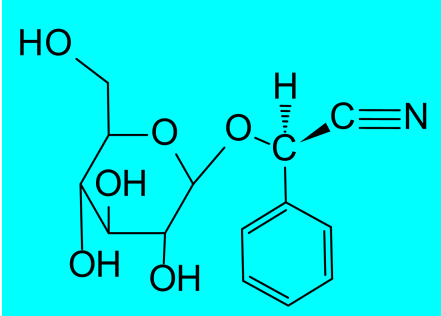
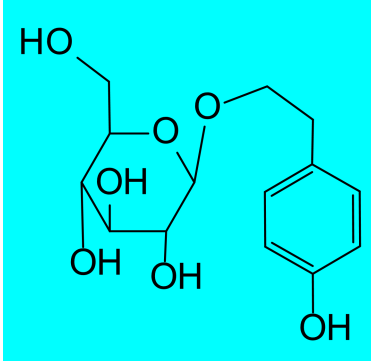
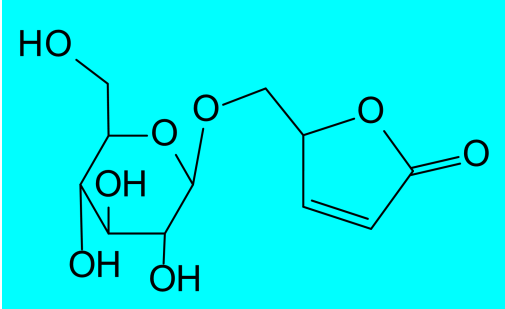
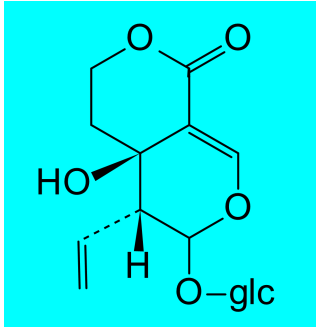
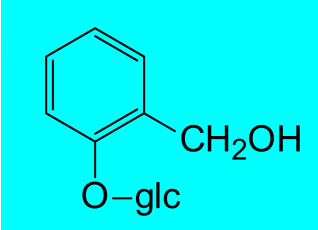
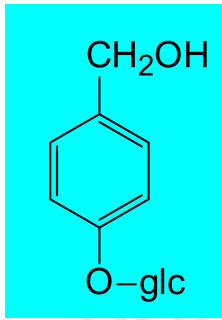


执业药师《中药一》苷类化合物化学结构图

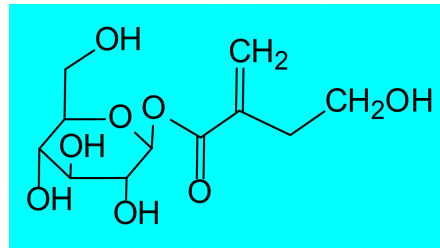
<p>苦杏仁苷 (氰苷)</p> 	<p>七叶内酯苷 (香豆素苷)</p> 
<p>靛苷 (吲哚苷)</p> 	<p>野樱苷 (次生苷)</p> 
<p>红景天苷 (醇苷)</p> 	<p>毛茛苷 (醇苷)</p> 
<p>獐牙菜苦苷 (醇苷)</p> 	<p>水杨苷 (酚苷)</p> 



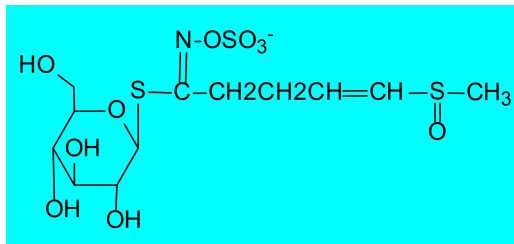
天麻苷 (酚苷)



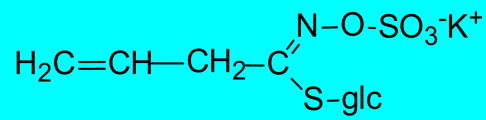
山慈菇苷 A (酯苷)



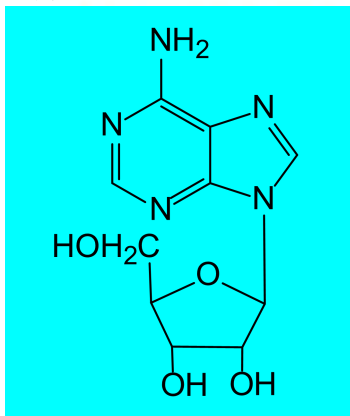
萝卜苷 (硫苷)



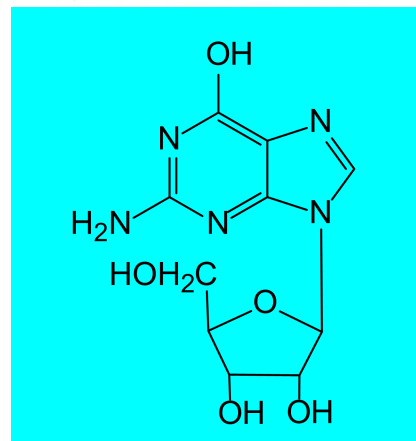
黑芥子苷



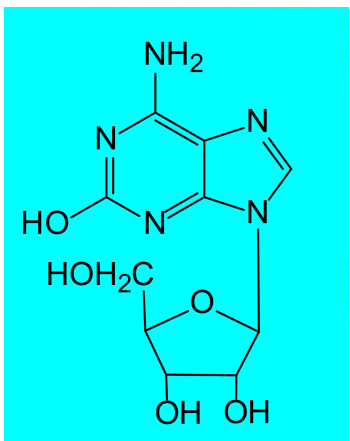
腺苷 (氮苷)



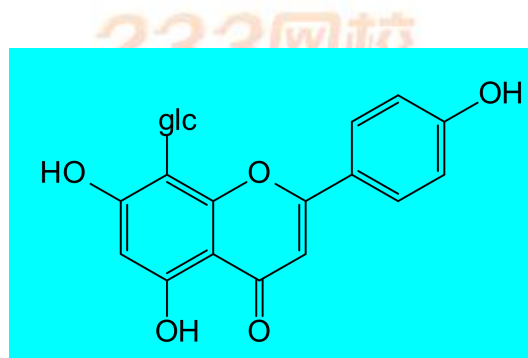
鸟苷 (氮苷)



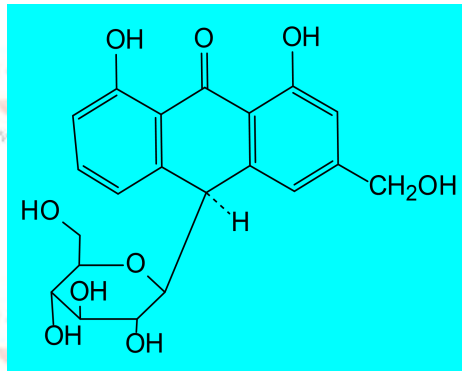
巴豆苷 (氮苷)



牡荆素 (碳苷)



芦荟苷 (碳苷)



233网校
www.233.com

233网校
www.233.com

233网校
www.233.com

233网校
www.233.com

233网校
www.233.com

233网校
www.233.com

233网校
www.233.com

233网校
www.233.com

233网校
www.233.com

233网校
www.233.com



扫码下载 233 网校题库
一刷就过, 千万人掌上题库!