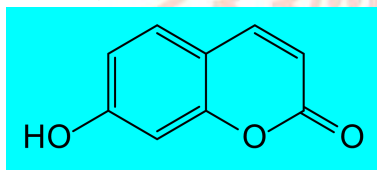


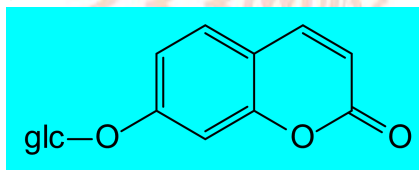
执业药师《中药一》香豆素类化合物化学结构图

1. 简单香豆素类

伞形花内酯

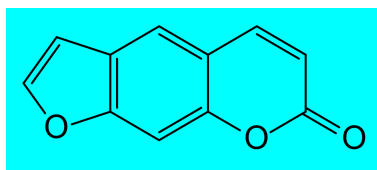


茵芋苷

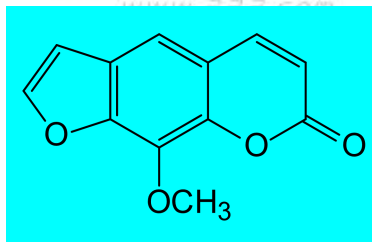


2. 呋喃香豆素类

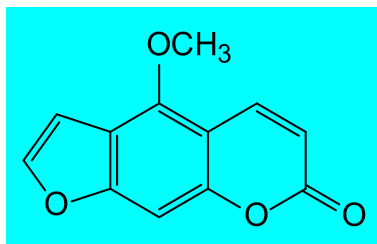
补骨脂内酯



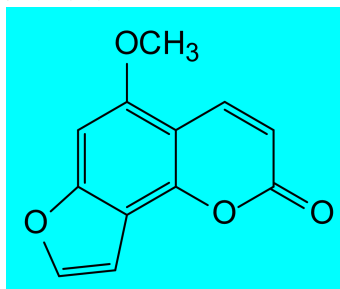
花椒毒内酯



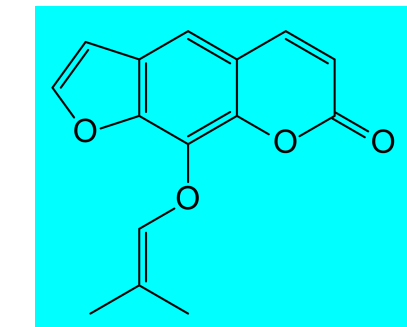
香柑内酯



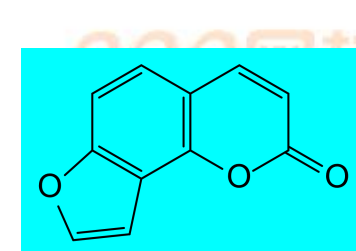
异香柑内酯



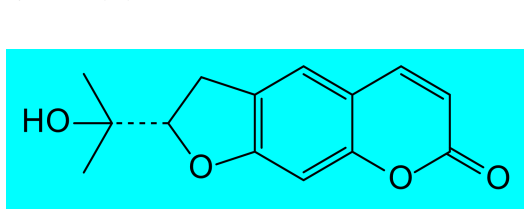
欧前胡内酯



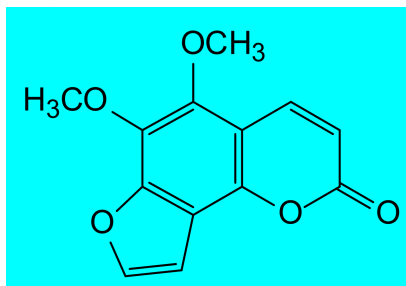
白芷内酯



紫花前胡内酯

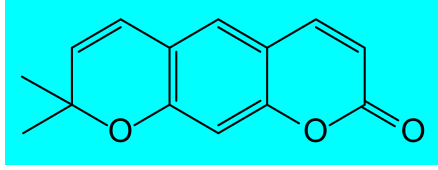


茵芋内酯

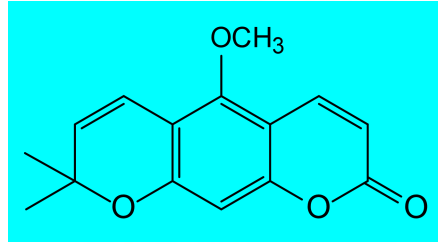


3. 吡喃香豆素类

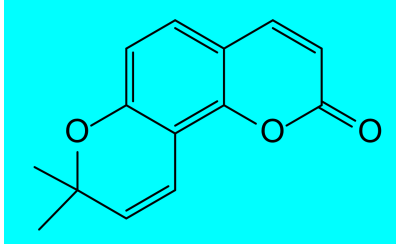
花椒内酯



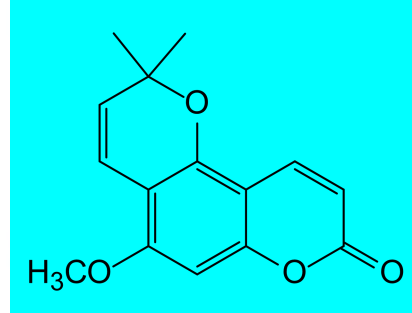
美花椒内酯



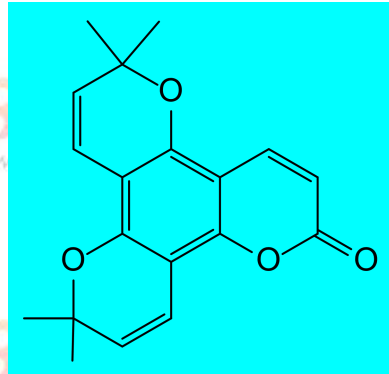
邪蒿内酯



别美花椒内酯

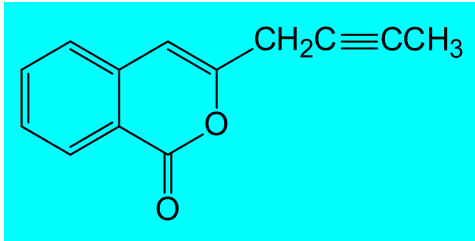


狄佩它妥内酯

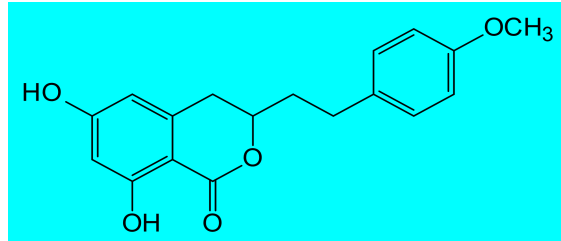


4. 异香豆素类

茵陈炔内酯



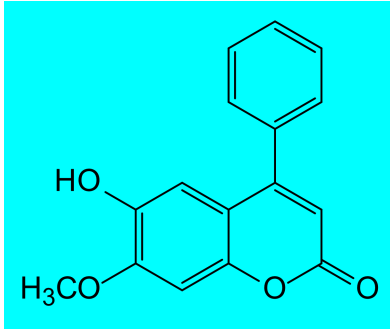
仙鹤草内酯



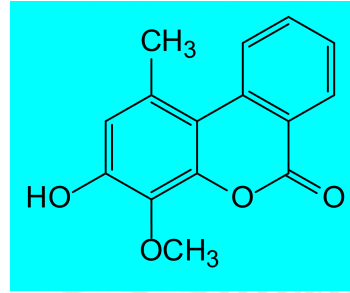
扫码下载 233 网校题库  
一刷就过, 千万人掌上题库!

5. 其他香豆素类

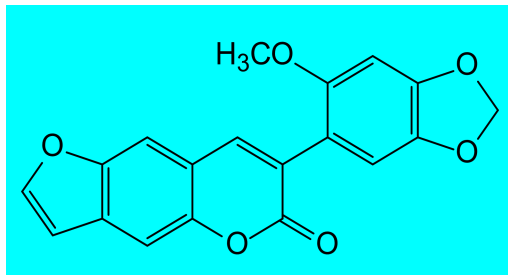
黄檀内酯



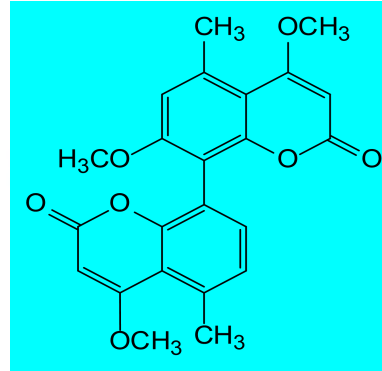
autumnariniol



沙葛内酯



kotamin



扫码下载 233 网校题库  
一刷就过, 千万人掌上题库!